

Di@na Series

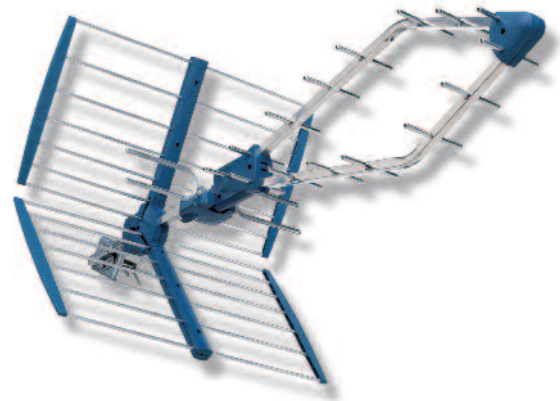
Di@na is a carefully designed antenna, which construction cares even the smallest details, maintaining the symmetry in all components that minimizes internal reflections and maximize performance.

APPLICATION

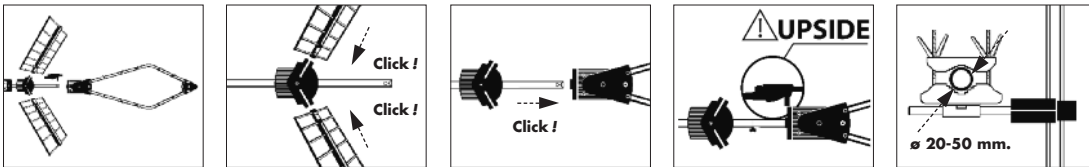
Digital and analogue TV reception.

CHARACTERISTICS

- Pre-assembled for easy set-up.
- The reflector and dipole have been designed for a higher front-to-back ratio.
- Long-life antenna due to its aluminium and ABS plastic construction.
- Ergonomic design for a tool-free installation.
- Suitable for horizontally or vertically polarised channels, maintaining its water-proofing in any position.
- It has an "F" connector with protection cover.
- In case of low coverage areas, the **Di@na @ktive** model incorporates a dipole that improves the reception margin in the installation.



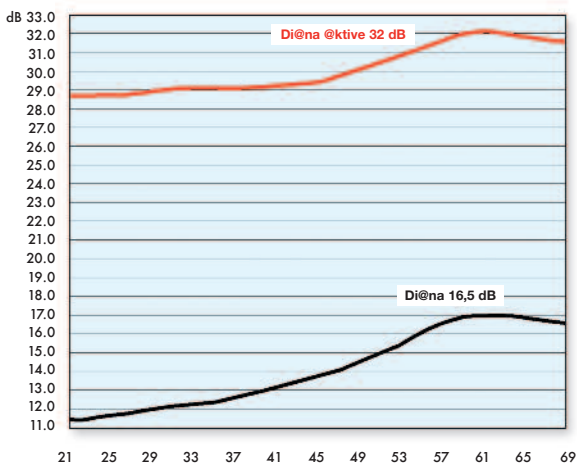
SIGNAL RECEPTION



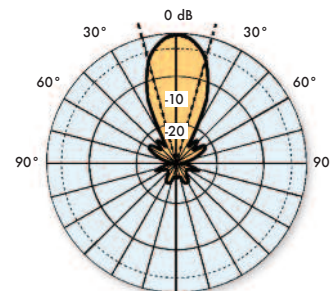
Supply voltage	12 ÷ 24 Vdc
Current drawn	25 mA

MODEL		Di@na	Di@na 6U	Di@na @ktive	Di@na @ktive 6U
Reference		84375	84377	84387	84386
Channels		21 ... 69			
Gain	dB	16,5		32	
Impedance	Ω	75			
Return losses	dB	15			
Horizontal opening angle at -3dB	°	33			
Length	mm	1.128			
Windload	130 km/h 160 km/h	N		71 98	
Units per package		1	6	1	6
Packing Dimensions	mm	740 x 330 x 180	760 x 340 x 660	740 x 330 x 180	760 x 340 x 660
Weight	Kg	2	12	2	12

GAIN RESPONSE



HORIZONTAL OPENING DIAGRAM



EASY INSTALLATION



LIGHTWEIGHT, BUT ROBUST



HIGH RESISTANCE