

# rhombus Series

**OPTIMISED DIGITAL TV HDTV ANTENNA with high gain and excellent mechanical resistance.**

**APPLICATION**

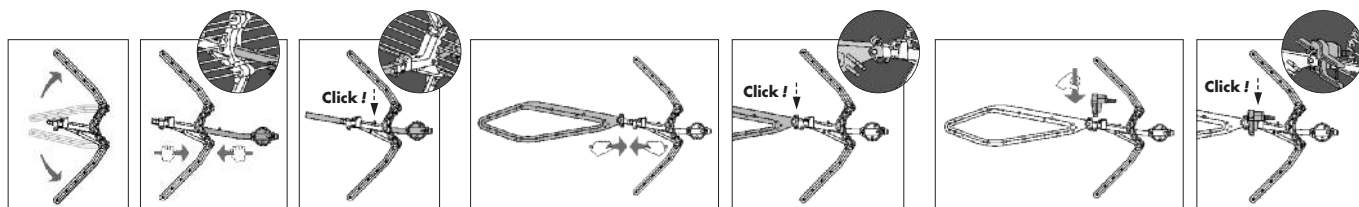
Digital and analog TV reception for community and individual antenna installations, some models totally adapted to the LTE environment.





**CHARACTERISTICS**

- Modern, optimised design to achieve optimum gain/size ratio.
- Active/passive dipole.
- Self-adapting: provides a constant, balanced signal, minimising loss and maximising adaptation.
- Lightweight and robust, designed with state-of-the-art technology to guarantee an excellent response and a long lifetime.
- High quality plastic with special UV protection.
- Easy installation, in just 3 clicks, no tools needed.
- Compact, small-sized single-unit packing.
- Simple, ergonomic mast fixing system to guarantee secure mounting.



SIGNAL RECEPTION



MODEL	rhombus 	rhombus 5 	rhombus P 	rhombus 5 P 	rhombus C69	rhombus C69 5	rhombus C69P	rhombus C69P 5
Reference	84390	84391	84393	84392	84398	84399	84396	84400
Channels	21-60				21-69			
Gain	17 (34 active)		17		17 (34 active)		17	
Power supply	12-24		—		12-24		—	
Current drawn					45			
Horizontal opening angle at -3dB					36			
Back-to-front ratio					>24			
Length					980			
Windload	130 km/h				65			
	160 km/h				92			
Units per package	1	5	1	5	1	5	1	5
Package dimensions	600 x 375 x 170	600 x 400 x 690	600 x 375 x 170	600 x 400 x 690	600 x 375 x 170	600 x 400 x 690	600 x 375 x 170	600 x 400 x 690
Operating temperature range	-20 ÷ 60							
Weight	2,15	10	2,15	10	2,15	10	2,15	10



ACTIVE/PASSIVE DIPOLE- 100% SEALED



SELF-ADAPTING



LTE MAXIMUM PROTECTION



HIGH RESISTANCE



EASY INSTALLATION



COMPACT SINGLE-UNIT PACKAGING



LIGHTWEIGHT, BUT ROBUST



NEW MAST FIXING SYSTEM

**GAIN RESPONSE**

