

Di@na X-trem Series

Rhombus shape antenna that offers maximum gain (18,5 dBi). Solves the DTT reception problems in overlapping coverage areas.

APPLICATION

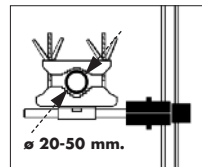
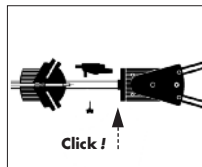
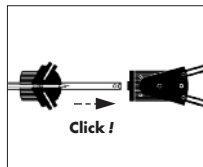
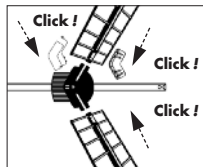
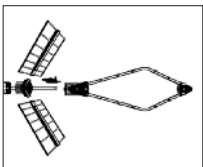
Digital TV reception.

CHARACTERISTICS

- Pre-assembled for easy set-up.
- The reflector and dipole have been designed for a higher front-to-back ratio.
- Long-life antenna due to its aluminium and ABS plastic construction.
- Ergonomic design for a tool-free installation.
- Suitable for horizontally or vertically polarised channels, maintaining its waterproofing in any position.
- It has an "F" connector with protection cover.



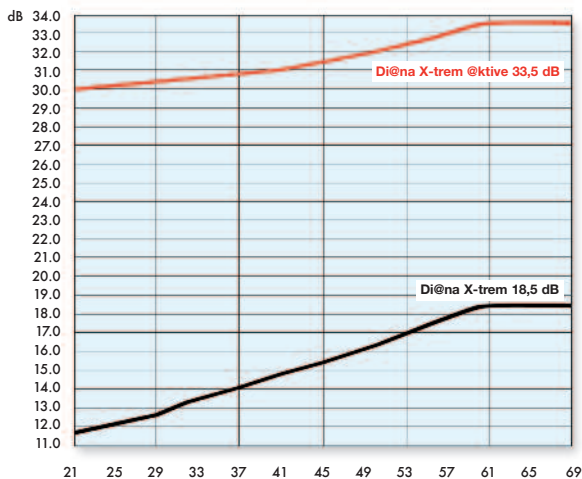
SIGNAL
RECEPTION



MODEL		Di@na X-trem
Reference		34388
Channels		21 ... 69
Gain	dB	18,5 (34 with @ktive dipole)
Impedance	Ω	75
Return losses	dB	15
Horizontal opening angle at -3 dB	$^{\circ}$	22
Length	mm	1.190
Windload	130 km/h 160 km/h	N
		122 153
Units per package		1
Packing Dimensions	mm	1000 x 480 x 160
Weight	Kg	2,5

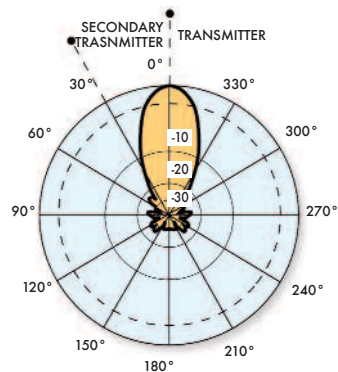
* Improves the factor of merit in low signal areas.

GAIN RESPONSE



RADIATION DIAGRAM

Gain 18 dBi



EASY INSTALLATION



LIGHTWEIGHT, BUT ROBUST



HIGH RESISTANCE